



**India Meteorological Department
(Ministry of Earth Sciences)**

HOURLY UPDATE ON CYCLONIC STORM '**GULAB**'

BULLETIN NO. 08

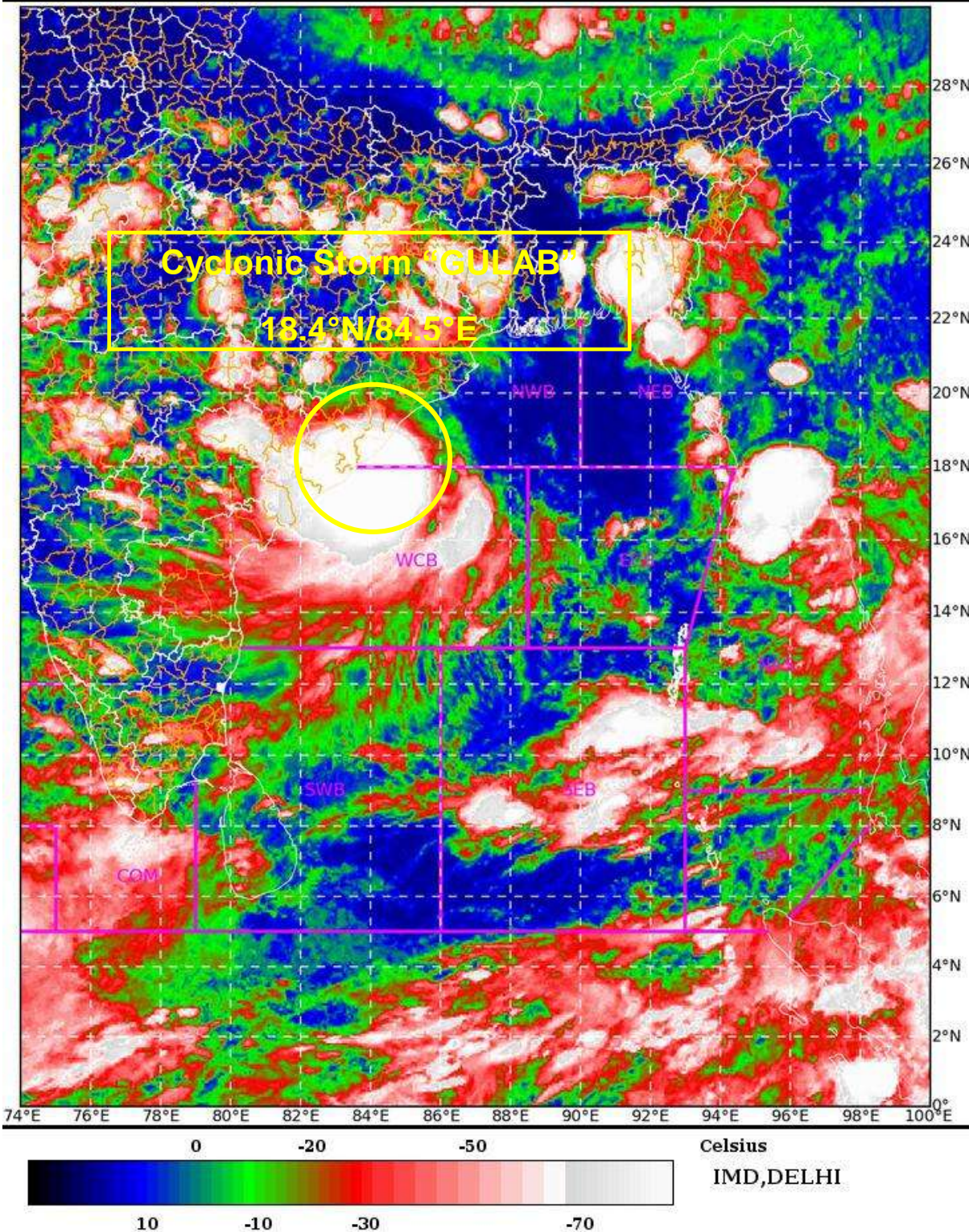
DATE: 26-09-2021

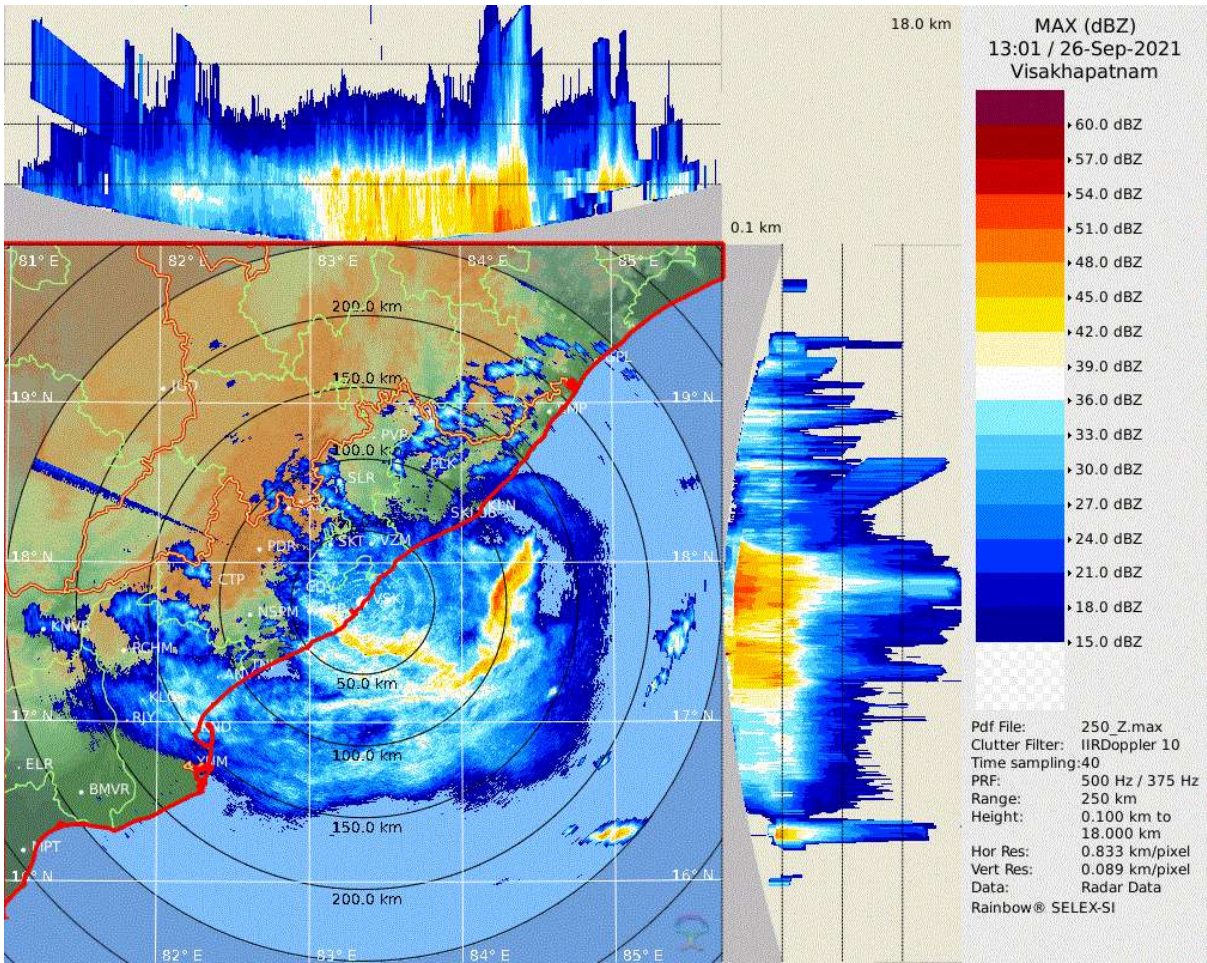
TIME OF ISSUE: 1915 HRS IST

| DATE/TIME (IST) OF OBSERVATION | BASED ON 26-09-2021 (1830 HRS IST) |
|---------------------------------------|--|
| LOCATION LATITUDE/LONGITUDE | <p>THE CYCLONIC STORM 'GULAB' (PRONOUNCED AS 'Gul-Aab') LAY CENTRED AT 1830 HRS IST OF THE 26TH SEP, 2021 OVER NORTHWEST AND ADJOINING WESTCENTRAL BAY OF BENGAL NEAR LATITUDE 18.4°N AND LONGITUDE 84.5°E, ABOUT 40 KM EAST-NORTHEAST OF KALINGAPATTNUM, 105 KM SOUTH-SOUTHWEST OF GOPLAPUR. THE SYSTEM IS LYING CLOSE TO COAST AND THE CENTRE IS ABOUT 25 KM TO THE EAST OF THE EXPECTED LANDFALL POINT.</p> <p>THE CLOUD BANDS ARE ENTERING THE COASTAL REGIONS AND THUS THE LANDFALL PROCESS, WHICH COMMENCED AT AROUND 1800 HRS IST, CONTINUES AND WILL CONTINUE FOR NEXT 2-3 HOURS OVER NORTH COASTAL ANDHRA PRADESH AND ADJOINING SOUTH COASTAL ODISHA.</p> <p>THE CYCLONE IS BEING MONITORED BY DOPPLER WEATHER RADAR AT VISHAKHAPATNAM AS WELL AS BY THE COASTAL METEOROLOGICAL OBSERVATORIES. LIGHT TO MODERATE RAINFALL IN ASSOCIATION WITH THE INNER BANDS OF THE SYSTEM HAS COMMENCED OVER SOUTH COASTAL ODISHA AND COASTAL ANDHRA PRADESH.</p> <p>ALSO A GRADUAL & STEADY INCREASE IN WIND SPEED IS BEING RECORDED BY THE COASTAL STATIONS OF SOUTH ODISHA, SINCE 1230 HRS IST. AT 1730 HRS IST, PURI REPORTED A MAXIMUM WIND SPEED OF 31 KMPH, FOLLOWED BY GOPALPUR, 26 KMPH.</p> |
| CURRENT INTENSITY NEAR CENTRE | 75-85 KMPH GUSTING TO 95 KMPH |
| PAST MOVEMENT | MOVED NEARLY WESTWARDS WITH A SPEED OF 23 KMPH DURING PAST 06 HOURS. |
| FORECAST MOVEMENT AND INTENSITY | THE SYSTEM IS LIKELY TO CROSS NORTH ANDHRA PRADESH - SOUTH ODISHA COASTS BETWEEN KALINGAPATNAM & GOPALPUR, ABOUT 25 KM TO THE NORTH OF KALINGAPATNAM AS A CYCLONIC STORM WITH MAXIMUM SUSTAINED WIND SPEED OF 75-85 KMPH GUSTING TO 95 |

| | |
|--|--|
| | KMPH DURING NEXT 2-3 HOURS. |
| FORECAST RAINFALL | <ul style="list-style-type: none"> • 26TH SEP: LIGHT TO MODERATE RAINFALL AT MOST PLACES WITH HEAVY TO VERY HEAVY FALLS AT A FEW PLACES & EXTREMELY HEAVY RAINFALL (≥ 20 CM) AT ISOLATED PLACES VERY LIKELY OVER SOUTH ODISHA AND NORTH COASTAL ANDHRA PRADESH; HEAVY TO VERY HEAVY FALLS AT ISOLATED PLACES IS ALSO LIKELY OVER TELANGANA AND HEAVY FALLS AT ISOLATED PLACES OVER NORTH INTERIOR ODISHA & CHHATTISGARH. • 27TH SEP: LIGHT TO MODERATE RAINFALL AT MOST PLACES WITH HEAVY TO VERY HEAVY & EXTREMELY HEAVY RAINFALL (≥ 20 CM) AT ISOLATED PLACES VERY LIKELY OVER SOUTH CHHATTISGARH; HEAVY TO VERY HEAVY FALLS AT ISOLATED PLACES OVER ODISHA, TELANGANA & VIDARBHA AND HEAVY RAINFALL AT ISOLATED PLACES OVER COASTAL WEST BENGAL & NORTH CHATTISGARH. |
| FORECAST WIND SPEED (KMPH) AT THE TIME OF LANDFALL | 75-85 KMPH GUSTING TO 95 KMPH |
| FORECAST STORM SURGE | TIDAL WAVE OF ABOUT 0.5 M HEIGHT ABOVE THE ASTRONOMICAL TIDE LIKELY TO INUNDATE LOW LYING AREAS OF SRIKAKULAM, VIZIANAGARAM, GANJAM DISTRICTS DURING THE TIME OF LANDFALL. |
| OBSERVED RAINFALL (MM) (FROM 0830 HRS IST OF TODAY) AND WIND (KMPH) DATA | WIND: PURI-33, GOPLAPUR-19, KALINGAPATNAM-15, RAINFALL: PURI-10, GOPALPUR-12, KALINGAPATNAM-58, SRIKAKULAM-51 |

SAT : INSAT-3D IMG 26-09-2021/(1230 to 1256) GMT
IMG_TIR1_TEMP 10.8 um 26-09-2021/(1800 to 1826) IST
L1C Mercator





Reflectivity imagery from Doppler weather RADAR Vishakhapatnam based on 1800 hrs IST of 26th September 2021.



OBSERVED AND FORECAST TRACK ALONGWITH QUADRANT WIND DISTRIBUTION OF CYCLONIC STORM GULAB OVER NORTHWEST AND ADJOINING WESTCENTRAL BAY OF BENGAL BASED ON 1200 UTC OF 26TH SEPTEMBER, 2021



DATE/TIME IN UTC
 IST=UTC + 0530
L: LOW PRESSURE AREA
WML: WELL MARKED LOW PRESSURE AREA
D: DEPRESSION (17-27 KT)
DD: DEEP DEPRESSION (28-33 KT)
CS: CYCLONIC STORM (34-47 KT)
SCS: SEVERE CYCLONIC STORM (48-63KT)
VSCS: VERY SEVERE CYCLONIC STORM (64-89 KT)
ESCS: EXTREMELY SEVERE CYCLONIC STORM (90-119 KT)
SuCS: SUPER CYCLONIC STORM (≥ 120 KT)

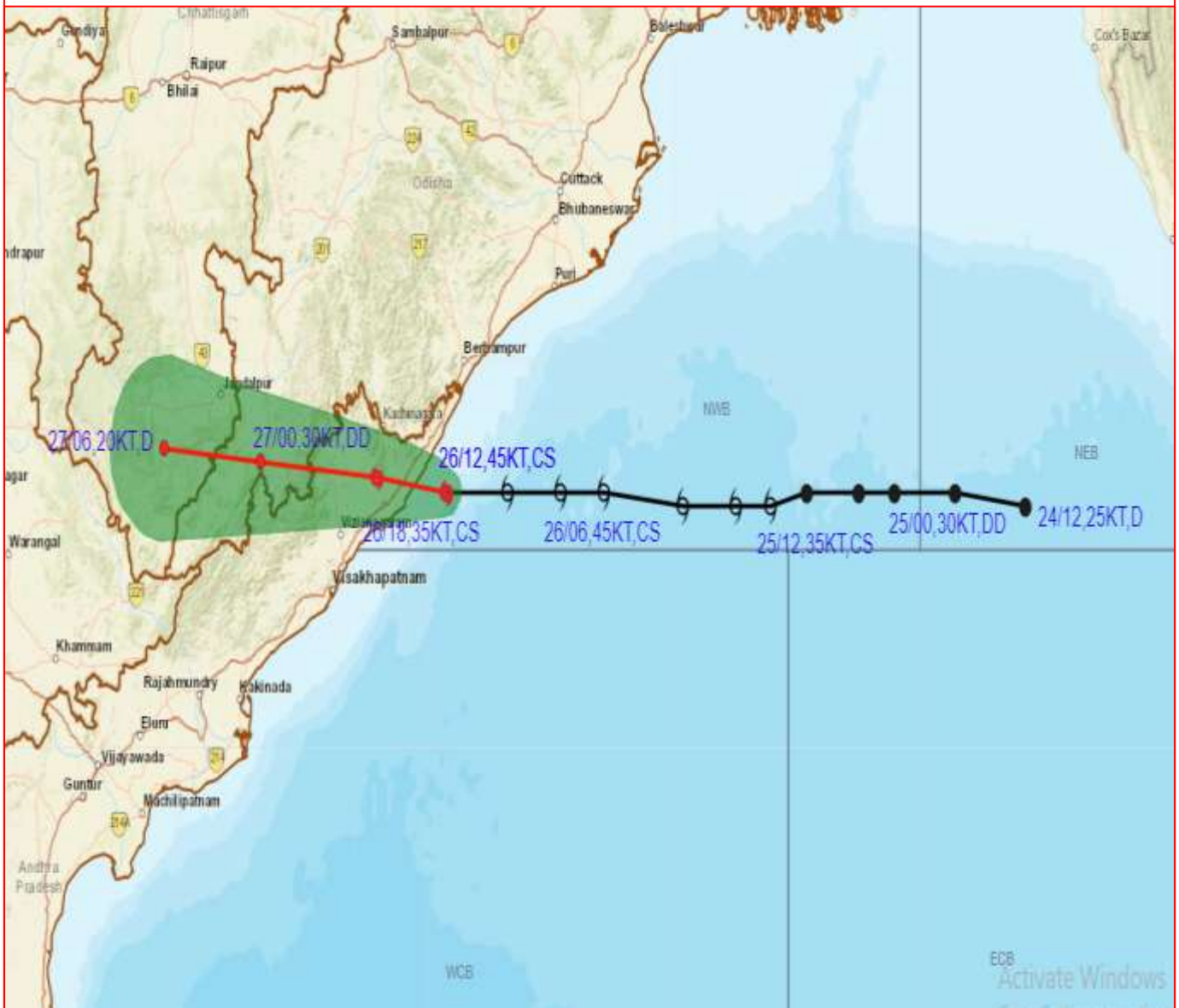
● LESS THAN 34 KT
 ⦿ 34-47 KT
 ⦿ ≥ 48 KT
 — OBSERVED TRACK
 — FORECAST TRACK
 ▲ CONE OF UNCERTAINTY
AREA OF MAXIMUM SUSTAINED WIND SPEED:
 ■ 28-33 KT (52-61 KMPH)
 ■ 34-49 KT (62-91 KMPH)
 ■ 50-63 KT (92-117 KMPH)
 ■ ≥ 64 KT (≥118 KMPH)

IMPACT OVER THE SEA

| MSW (knot/kmph) | Impact | Action |
|-----------------|------------------------|--|
| 28-33 (52-61) | Very rough seas | Total suspension of fishing operations |
| 34-49 (62-91) | High to very high seas | Total suspension of fishing operations |
| 50-63 (92-117) | Very high seas | Total suspension of fishing operations |
| ≥ 64 (≥118) | Phenomenal | Total suspension of fishing operations |

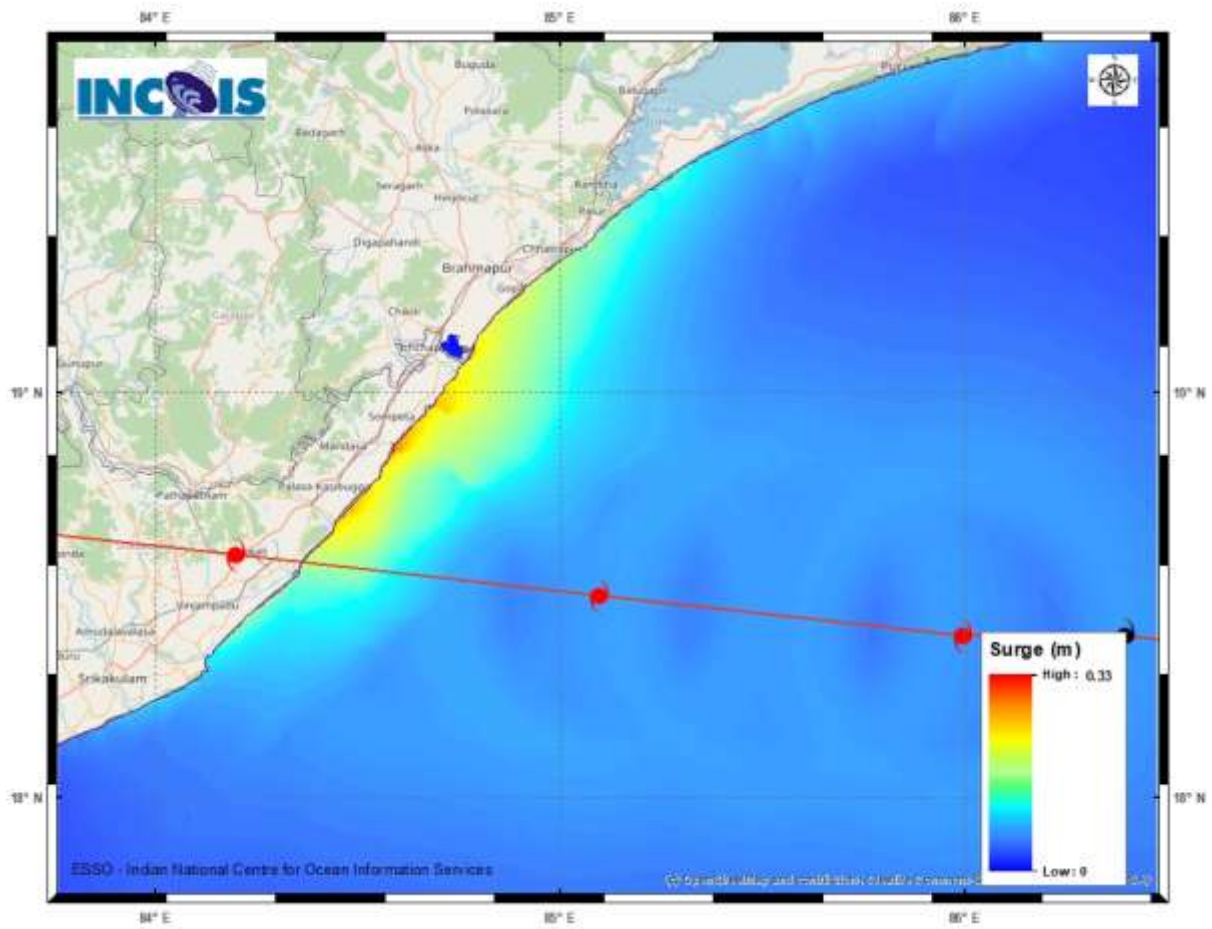


OBSERVED AND FORECAST TRACK OF CYCLONIC STORM GULAB OVER NORTHWEST AND ADJOINING WESTCENTRAL BAY OF BENGAL BASED ON 1200 UTC OF 26TH SEPTEMBER, 2021



DATE/TIME IN UTC
 IST=UTC + 0530
 L: LOW PRESSURE AREA
 WML: WELL MARKED LOW PRESSURE AREA
 D: DEPRESSION (17-27 KT)
 DD: DEEP DEPRESSION (28-33 KT)
 CS: CYCLONIC STORM (34-47 KT)
 SCS: SEVERE CYCLONIC STORM (48-63KT)
 VSCS: VERY SEVERE CYCLONIC STORM (64-89 KT)
 ESCS: EXTREMELY SEVERE CYCLONIC STORM (90-119 KT)
 SuCS: SUPER CYCLONIC STORM (\geq 120 KT)

- LESS THAN 34 KT
- 34-47 KT
- \geq 48 KT
- OBSERVED TRACK
- FORECAST TRACK
- CONE OF UNCERTAINTY



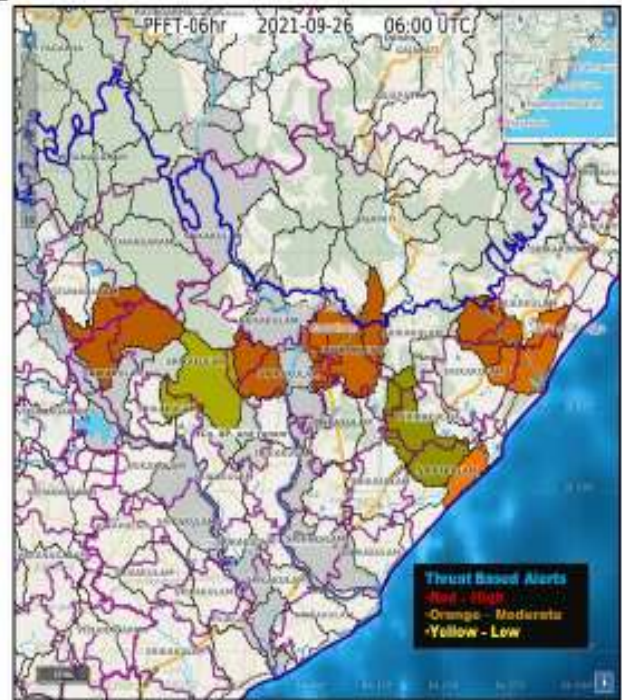
Storm surge graphics from INCOIS for the current system (BoB/04/2021)

Peak storm surge upto 0.5 m over and above the astronomical tide is noticed at (i) Sompeta and Tekkali of Srikakulam district, Andhra Pradesh and (ii) Brahmapur of Ganjam district, Odisha.

Forecasted Flash Flood Threat (PFFT)
Till 1730 IST of 26.09.2021:

Moderate to High Threat very likely over few watersheds and neighborhoods in the Srikakulam, Vizianagaram districts of North Coastal Andhra Pradesh and adjoining Gajapati district of South Odisha Met Subdivisions in next 6 hours.

Surface runoff/ Inundation may occur at some fully saturated soils & low-lying areas over AoC as depicted in map due to the persistence rainfall of Cyclonic Storm "Gulab" in next 6 hours.



24 hours Flash Flood Risk Outlook Till
1130 IST of 27.09.2021:

High Risk likely over few watersheds and neighborhoods of North Coastal Andhra Pradesh and adjoining South Odisha, South Chhattisgarh Met Subdivisions in next 24 hours.

Surface runoff/ Inundation may occur at some fully saturated soils & low-lying areas over AoC as depicted in map due to the expected rainfall of Cyclonic Storm "Gulab" approaching landfall in next 24 hours.

